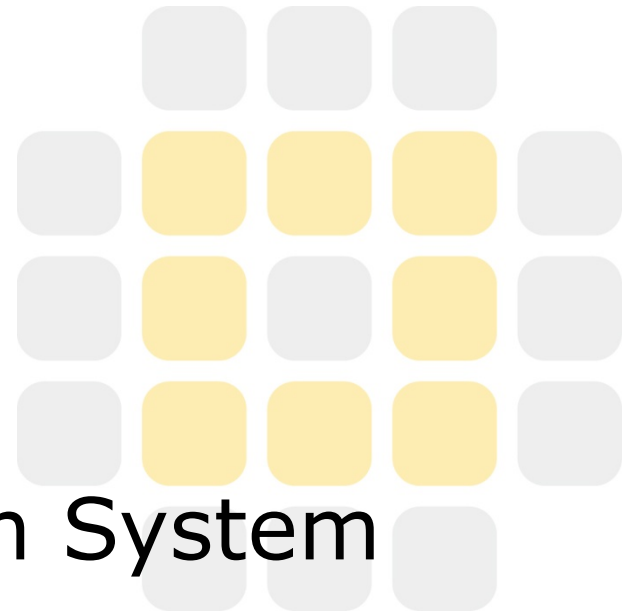
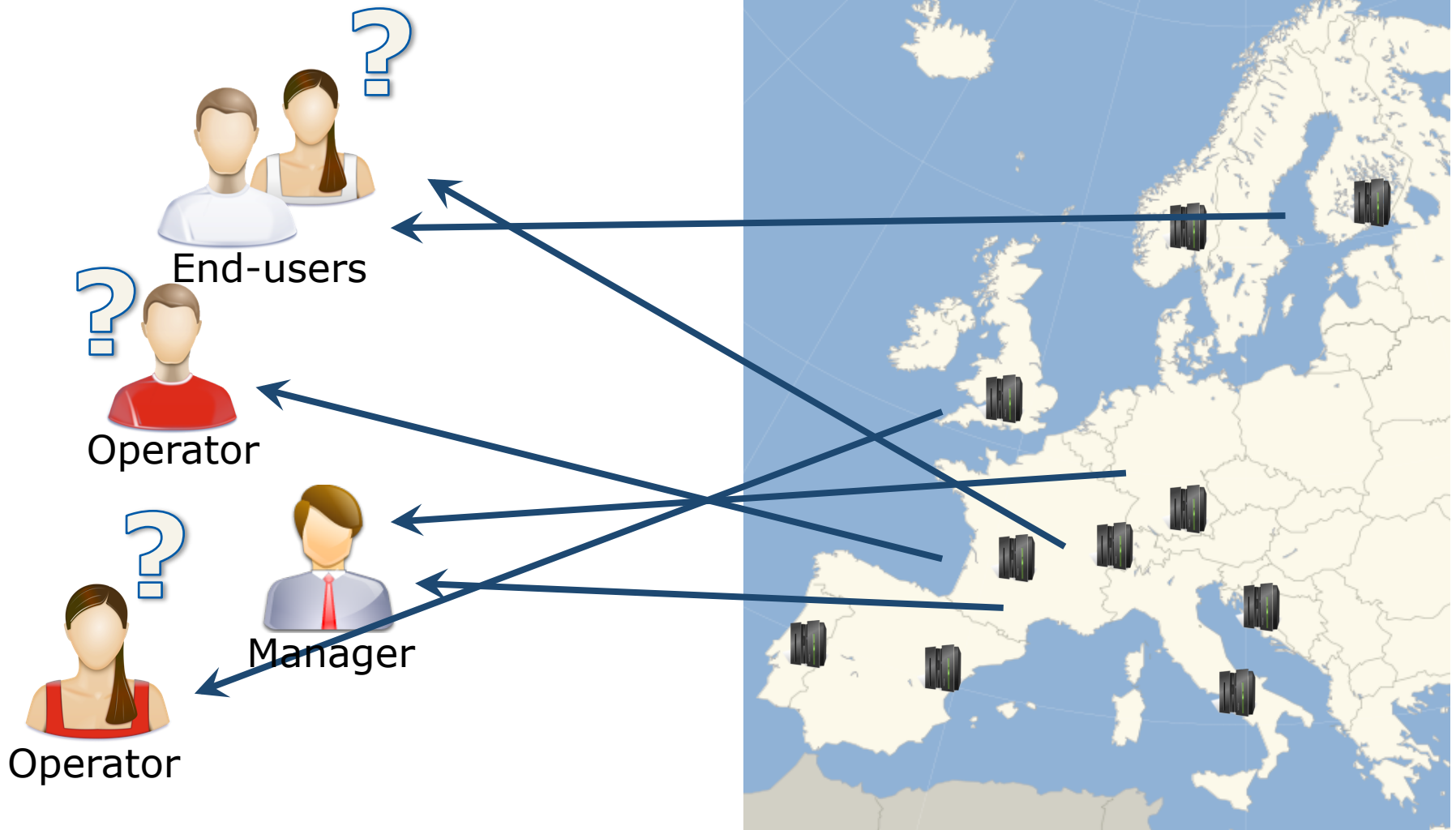


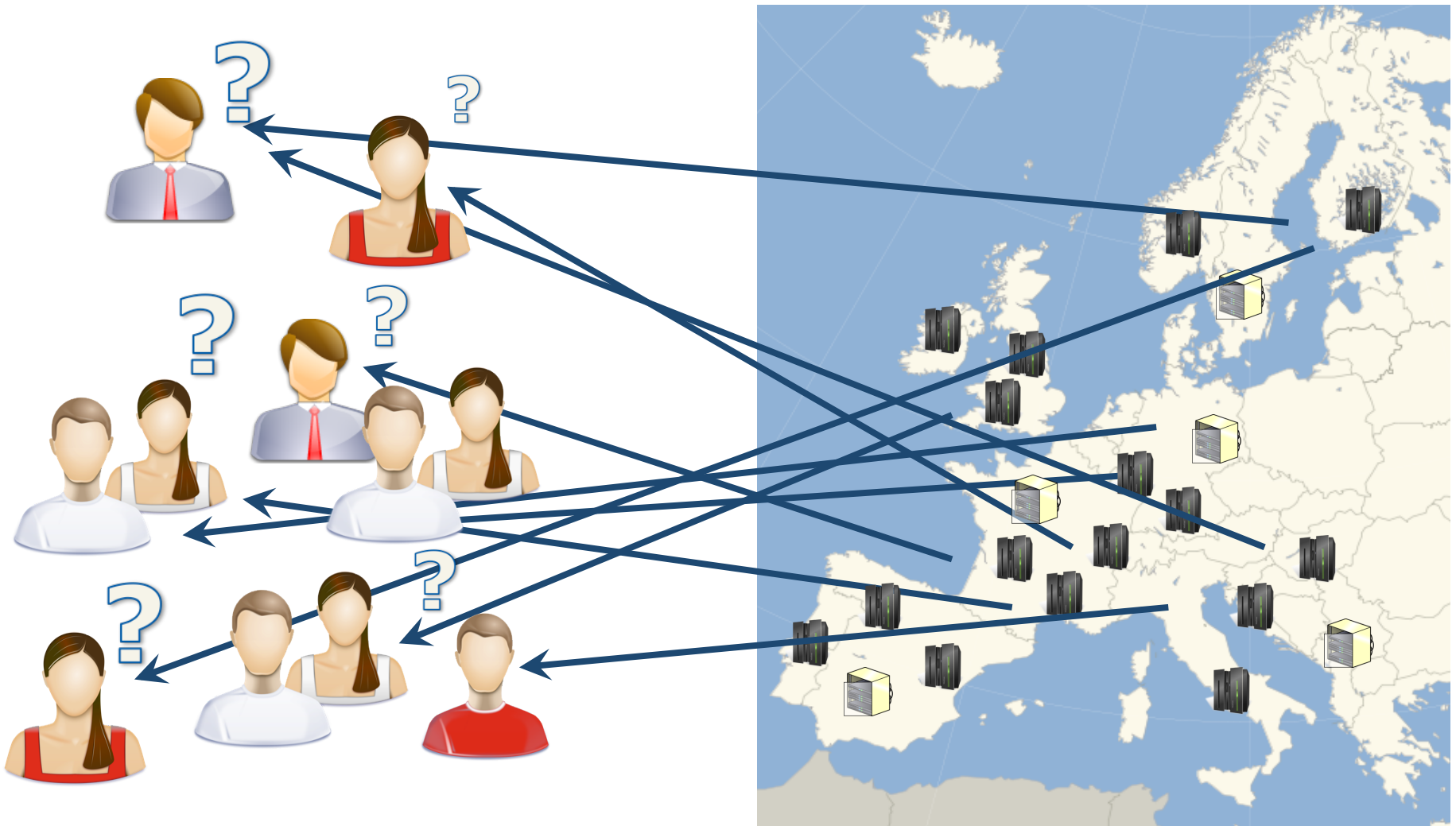
D-MON: Federated Information System



Ilya Saverchenko
Leibniz Supercomputing Centre

EGI Technical Forum, Prague
September 19, 2012









- Stakeholder information requirements:
 - Computing resources
 - Storage resources
 - Services
 - Jobs and tasks
 - Network
- Combination of information from multiple sources
- Information filtering and knowledge extraction

- Integration of deployed, operational information providers
- Support for Virtual Organizations
- Foster Grid middleware interoperability
- Information processing and knowledge discovery
- Operational in German national Grid infrastructure



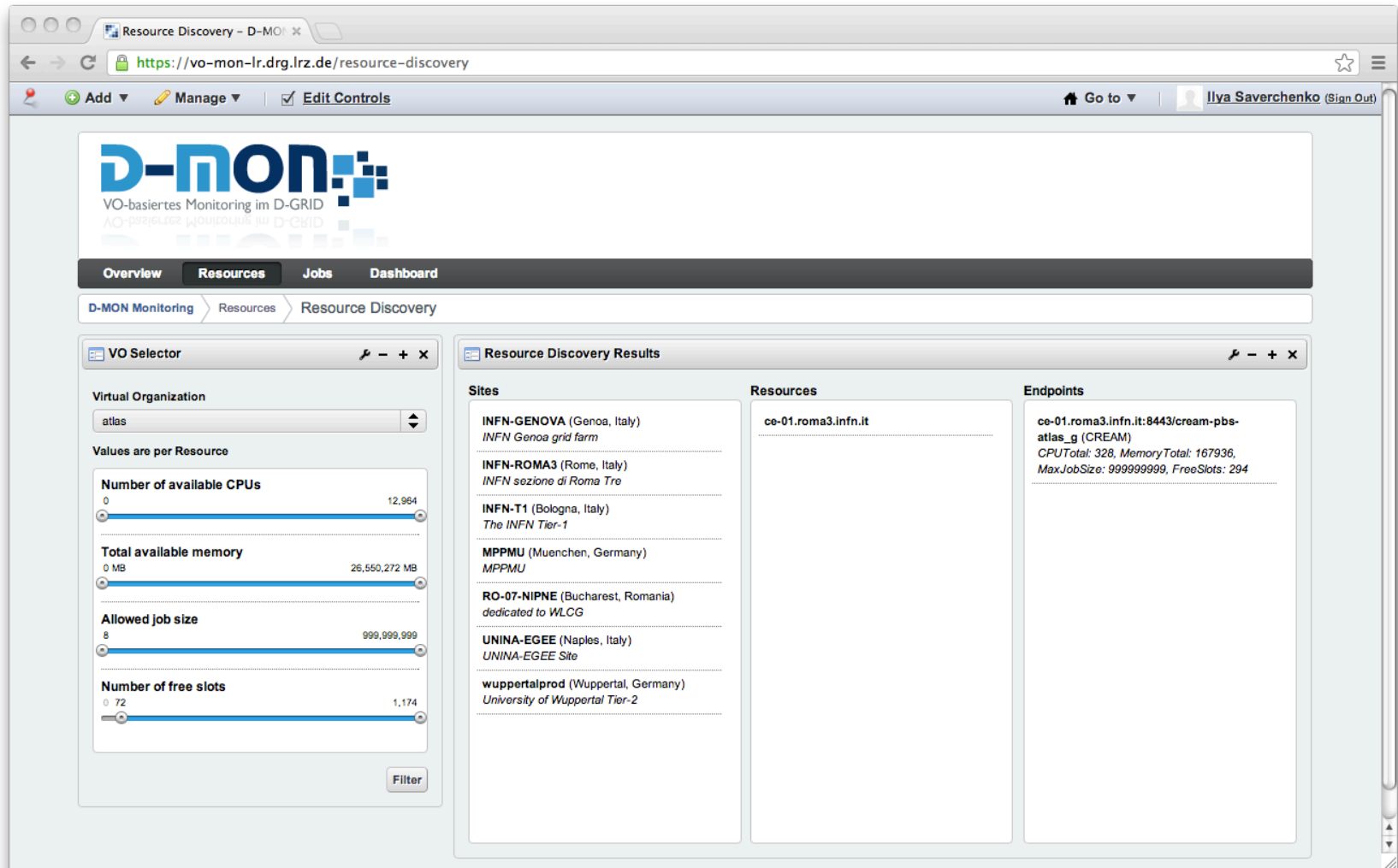
- Stakeholder views
 - Personalized web environment
- Knowledge discovery
 - Data analysis and statistics
- Integration of available information providers
 - Integration trough GLUE2.0 schema

Presentation

Business logic

Data

DEMO



Resource Discovery - D-MON

https://vo-mon-lr.drg.lrz.de/resource-discovery

Add Manage Edit Controls Go to Ilya Saverchenko (Sign Out)

D-MON
VO-basiertes Monitoring im D-GRID

Overview Resources Jobs Dashboard

D-MON Monitoring Resources Resource Discovery

VO Selector

Virtual Organization
atlas

Values are per Resource

Number of available CPUs
0 12,964

Total available memory
0 MB 26,550,272 MB

Allowed job size
8 999,999,999

Number of free slots
0 72 1,174

Filter

Resource Discovery Results

Sites

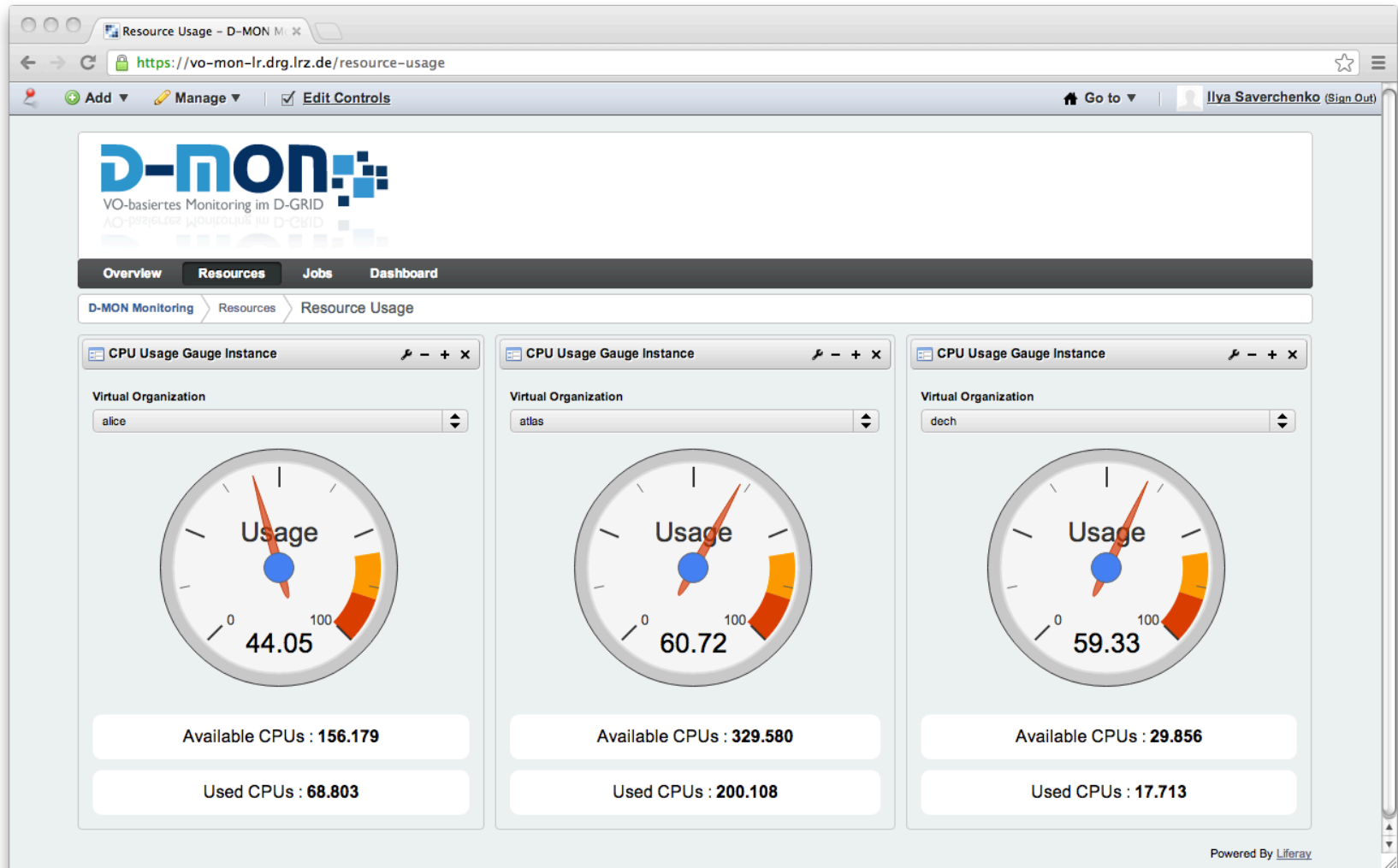
- INFN-GENOVA (Genoa, Italy)
INFN Genoa grid farm
- INFN-ROMA3 (Rome, Italy)
INFN sezione di Roma Tre
- INFN-T1 (Bologna, Italy)
The INFN Tier-1
- MPPMU (Muenchen, Germany)
MPPMU
- RO-07-NIPNE (Bucharest, Romania)
dedicated to WLCG
- UNINA-EGEE (Naples, Italy)
UNINA-EGEE Site
- wuppertalprod (Wuppertal, Germany)
University of Wuppertal Tier-2

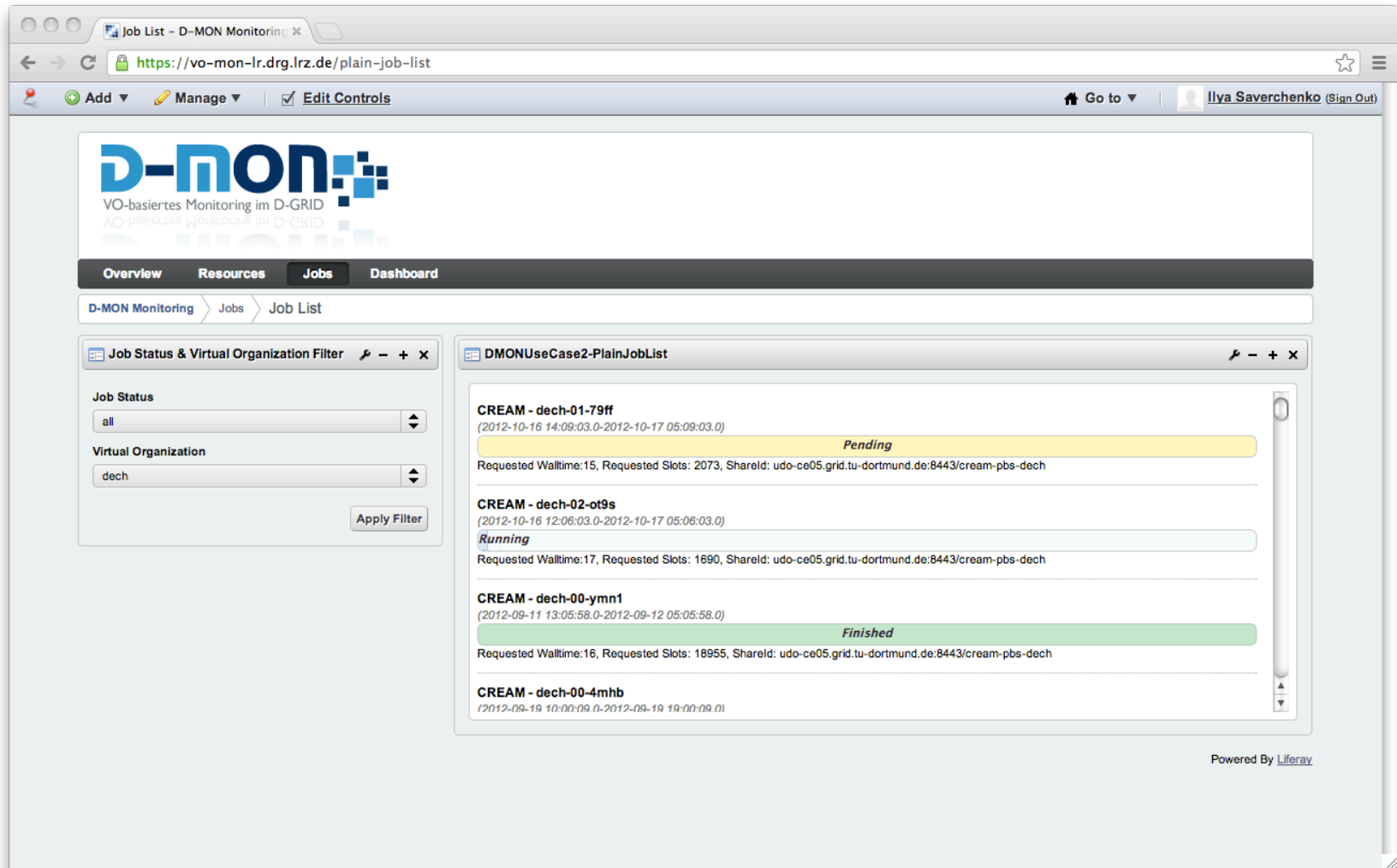
Resources

- ce-01.roma3.infn.it

Endpoints

- ce-01.roma3.infn.it:8443/cream-pbs-atlas_g (CREAM)
CPU Total: 328, Memory Total: 167936,
MaxJobSize: 99999999, FreeSlots: 294





D-MON
VO-basiertes Monitoring im D-GRID

Overview Resources **Jobs** Dashboard

D-MON Monitoring > Jobs > Job List

Job Status & Virtual Organization Filter

Job Status: all

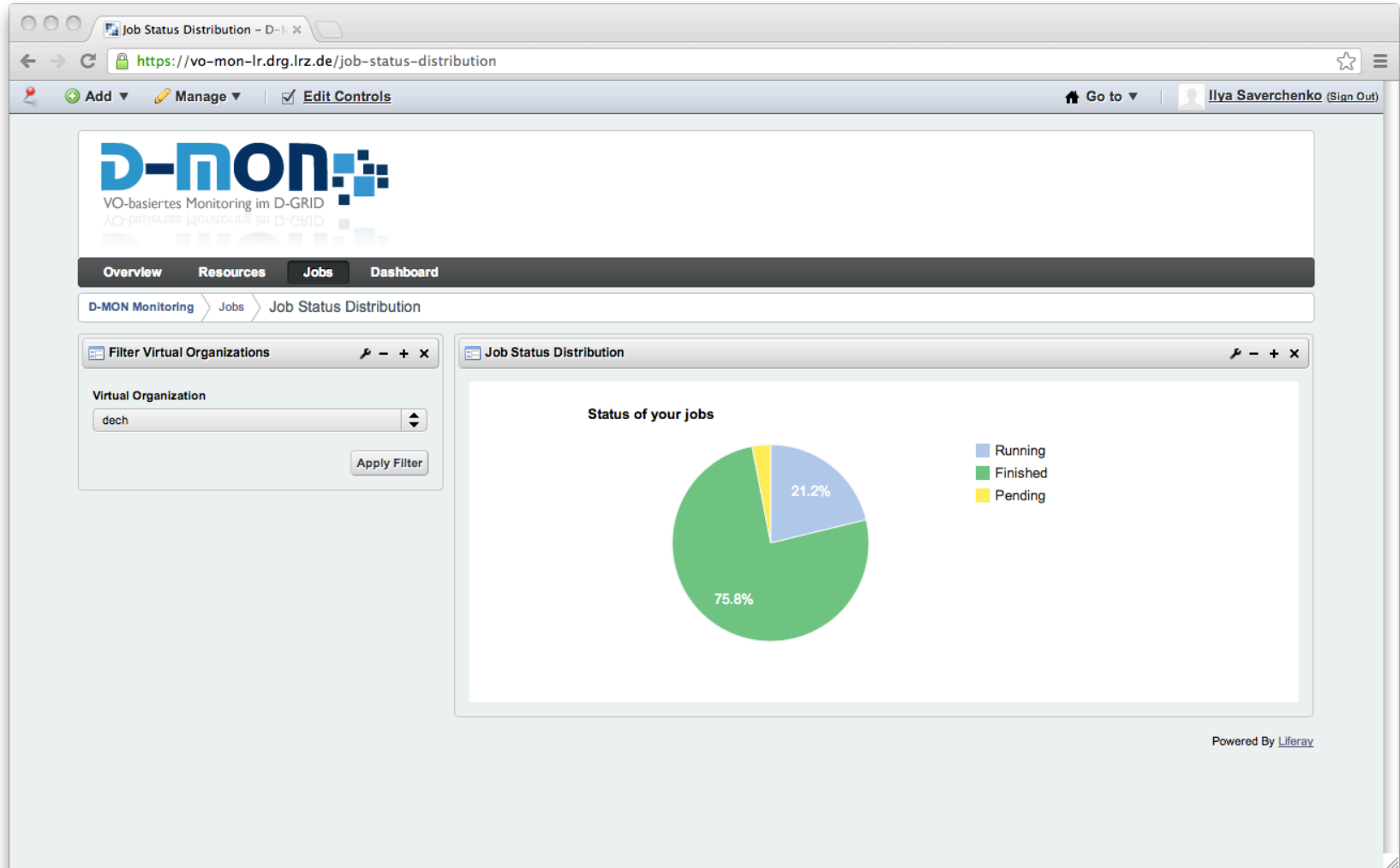
Virtual Organization: dech

Apply Filter

DMONUseCase2-PlainJobList

Job ID	Time Range	Status	Requested Walltime	Requested Slots	ShareId
CREAM - dech-01-79ff	(2012-10-16 14:09:03.0-2012-10-17 05:09:03.0)	Pending	15	2073	udo-ce05.grid.tu-dortmund.de:8443/cream-pbs-dech
CREAM - dech-02-ot9s	(2012-10-16 12:06:03.0-2012-10-17 05:06:03.0)	Running	17	1690	udo-ce05.grid.tu-dortmund.de:8443/cream-pbs-dech
CREAM - dech-00-ymn1	(2012-09-11 13:05:58.0-2012-09-12 05:05:58.0)	Finished	16	18955	udo-ce05.grid.tu-dortmund.de:8443/cream-pbs-dech
CREAM - dech-00-4mhb	(2012-09-19 10:00:09.0-2012-09-19 19:00:09.0)				

Powered By [Liferay](#)



- Facilitate and accelerate information discovery in distributed e-Infrastructures
- Integration of available information providers
 - Information systems, monitoring and accounting tools, VO management services
- Adhere to stakeholders' requirements
- Information analysis and knowledge discovery
- Support and implementation of open standards

Looking forward to your comments and questions

Contact developers:

Anton Frank – frank@lrz.de

Christian Straube – straube@lrz.de

Ilya Saverchenko – saverchenko@lrz.de