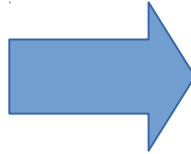
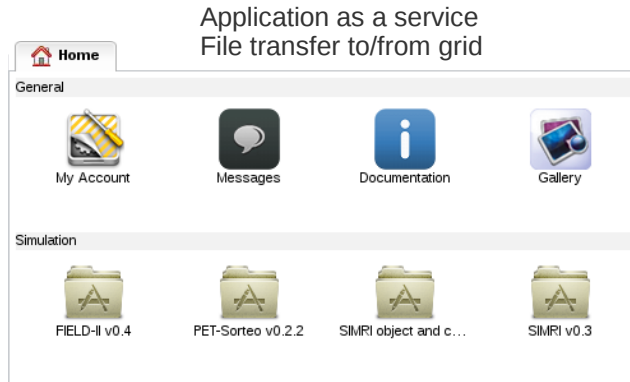




Virtual Imaging Platform (VIP)

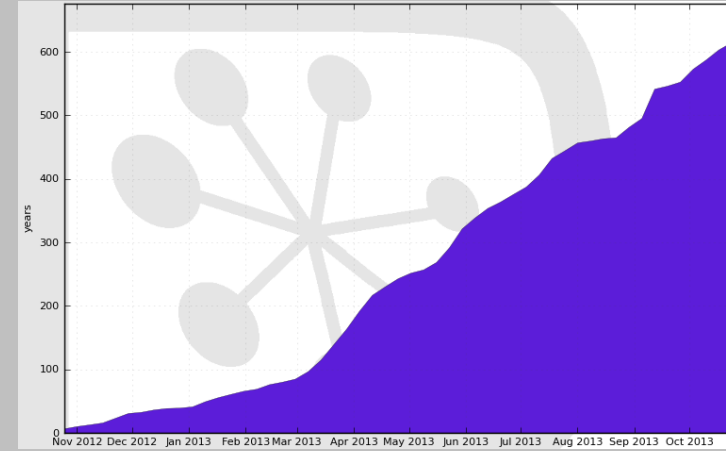
<http://www.creatis.insa-lyon.fr/vip>

Web portal



Infrastructure

Supported by EGI Infrastructure
 Uses biomed VO
 VIP accounts for ~25% of biomed's activity
 VIP consumes ~50 CPU years every month



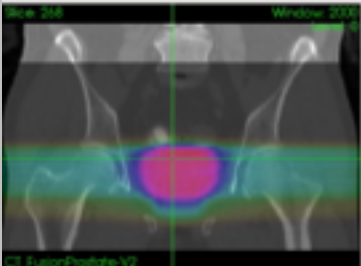
France-Grilles



DIRAC

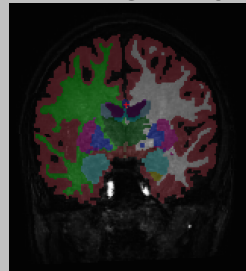
Scientific applications

Cancer therapy simulation



Prostate radiotherapy plan simulated with GATE (L. Grevillot and D. Sarrut)

Neuro-image analysis



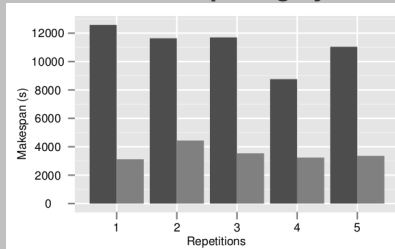
Brain tissue segmentation with Freesurfer

Image simulation



Echocardiography simulated with FIELD-II (O. Bernard et al)

Modeling and optimization of distributed computing systems



Acceleration yielded by non-clairvoyant task replication (R. Ferreira da Silva et al)

Users

479 registered users in Nov 2013 (175 in France)
 Most used robot certificate in EGI (<http://go.egi.eu/wiki.robot.users>)



Web portal

Application as a service
File transfer to/from grid

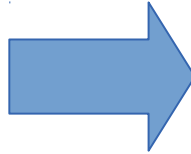
Home

General

- My Account
- Messages
- Documentation
- Gallery

Simulation

- FIELD-II v0.4
- PET-Sorteo v0.2.2
- SIMRI object and c...
- SIMRI v0.3



Infrastructure

Supported by EGI Infrastructure
Uses biomed VO
VIP accounts for ~25% of biomed's activity
VIP consumes ~50 CPU years every month



France-Grilles

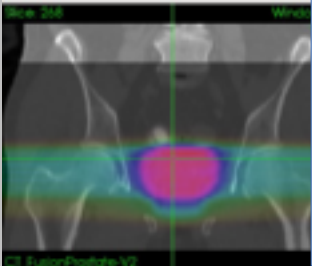


DIRAC

Sep 2013 Oct 2013

Scientific applications

Cancer therapy simulation



Prostate radiotherapy plan simulated with GATE(L. Grevillot and D. Sarrut)

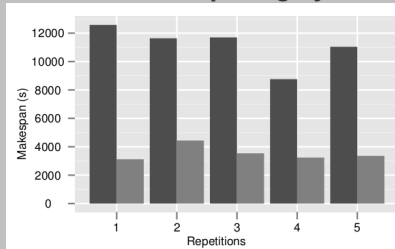
Image simulation



Echocardiography simulated with FIELD-II (O. Bernard *et al*)

Brain tissue segmentation with Freesurfer

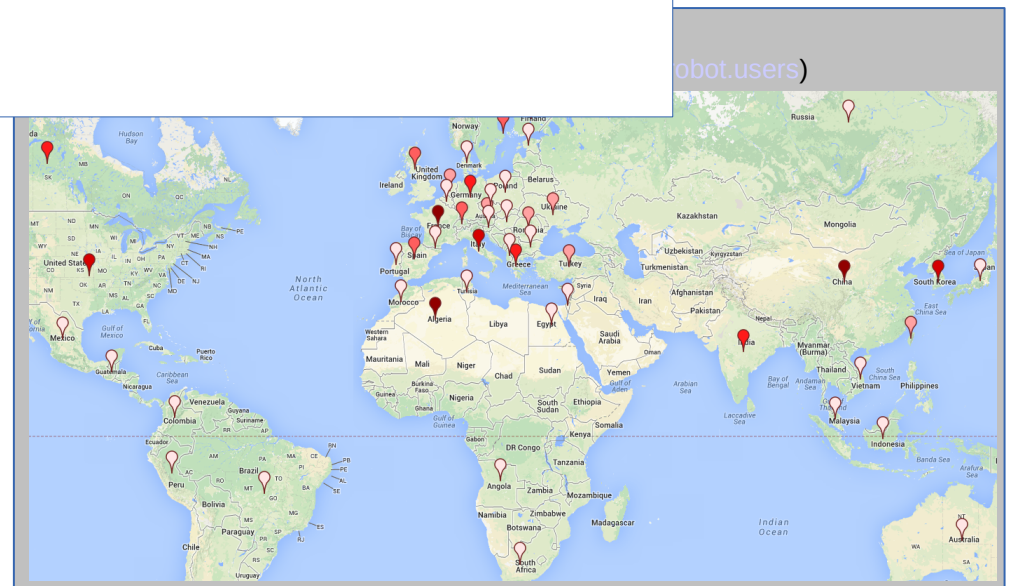
Modeling and optimization of distributed computing systems



Acceleration yielded by non-clairvoyant task replication (R. Ferreira da Silva *et al*)

Status w.r.t DIRAC:

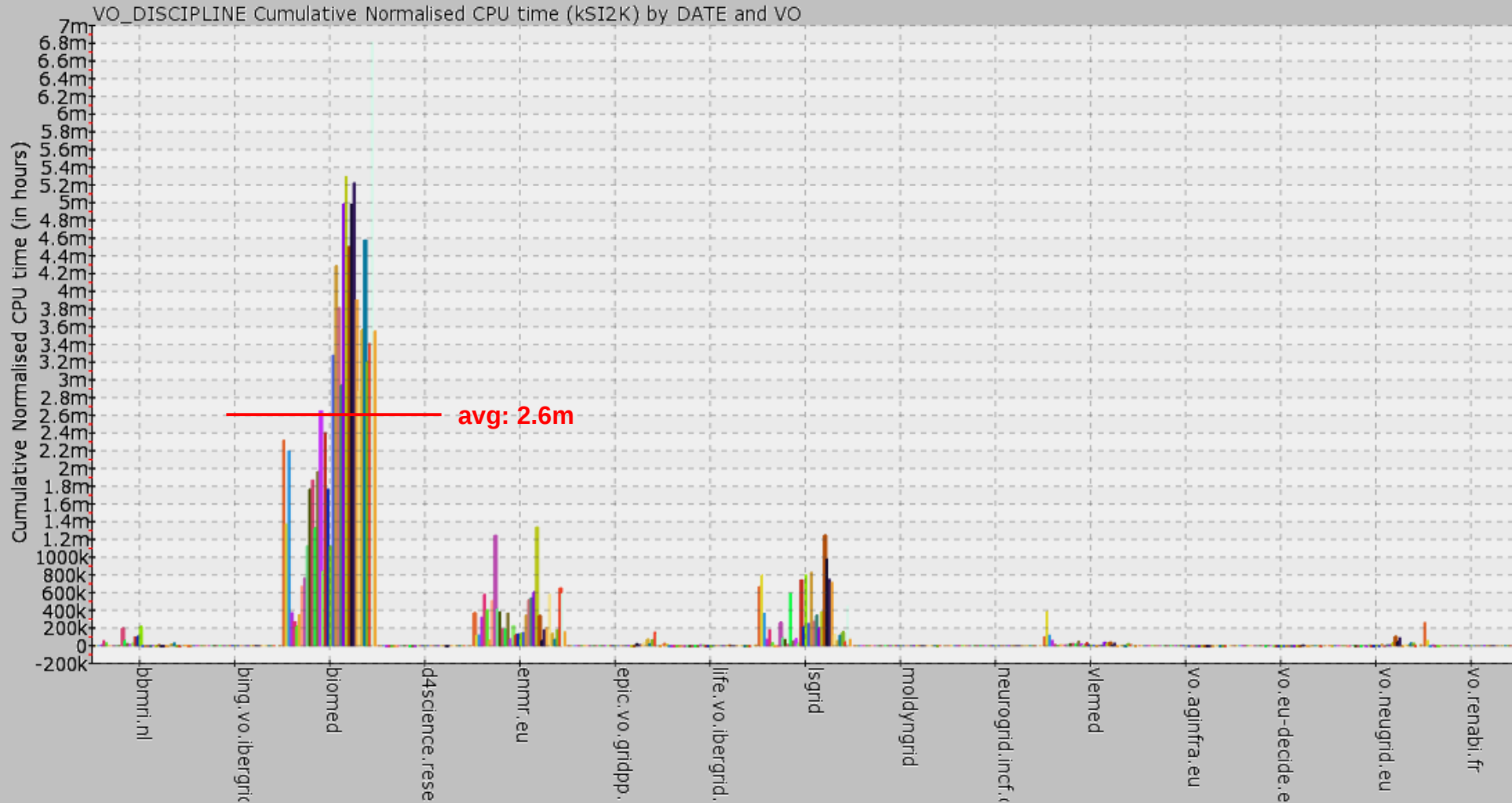
- Heavy user of job scheduler (France-Grilles instance)
- Interested by DIRAC Virtual Machines
- Interested by DIRAC data management



Computing activity and resources (March 2011 – February 2014, compared to life-science EGI VOs)

Developed by CESGA EGI View: / nomcpu / 20113-2014.2 / DATE-VO / lhc (x) / GRBAR-LIN / i

2014-02-17 09:56



Disciplines

- Any non-commercial, life-science related experiment is welcome
- In practice: bioinformatics, medical imaging, drug discovery

Provided services

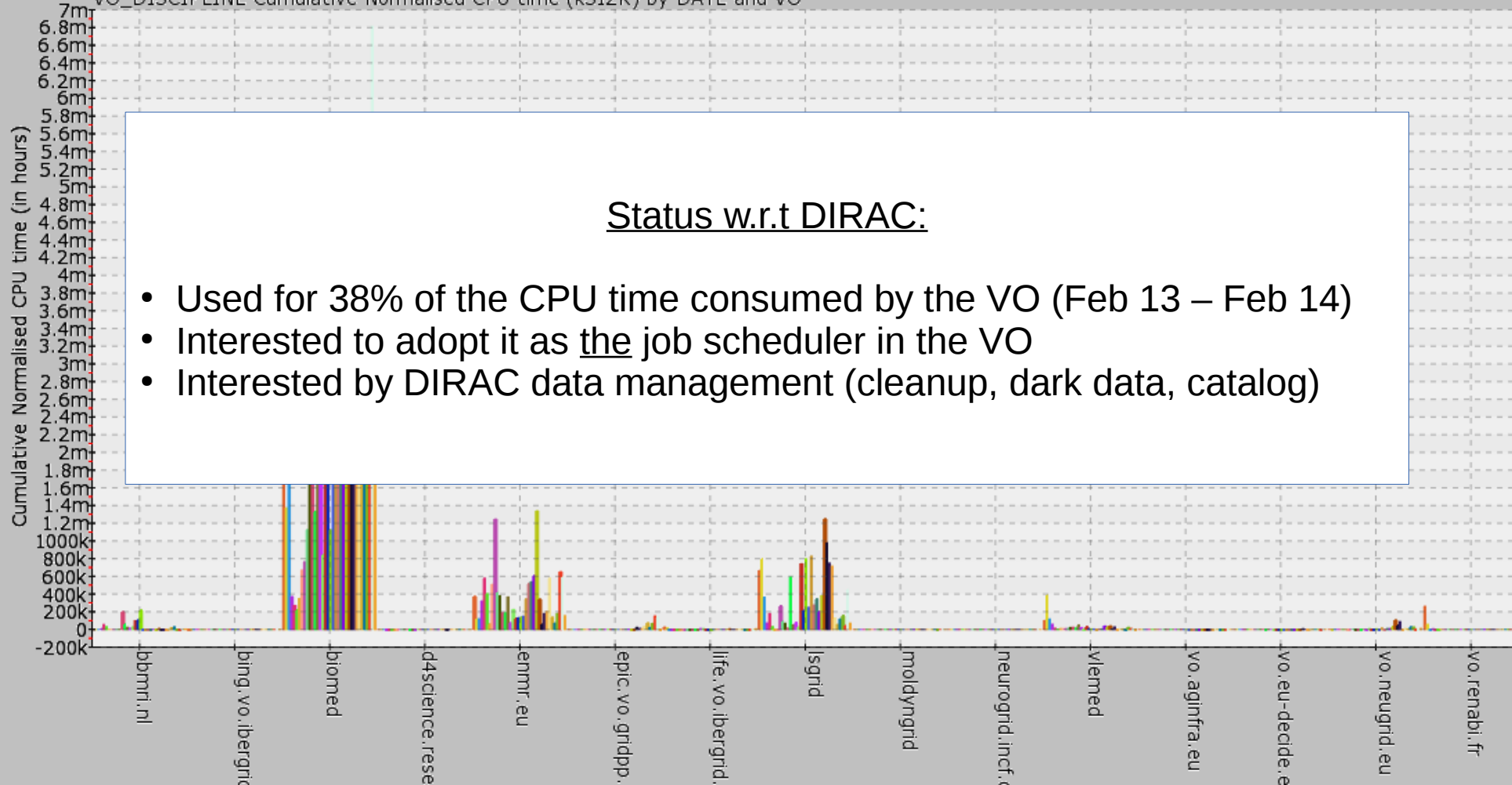
- VO monitors sites and services (Nagios)
- Users are free to use any tool to access resources

Computing activity and resources (March 2011 – February 2014, compared to life-science EGI VOs)

Developed by CESGA EGI View: / nomcpu / 20113-20142 / DATE-VO / lhc (x) / GRBAR-LIN / i

2014-02-17 09:56

VO_DISCIPLINE Cumulative Normalised CPU time (kSI2K) by DATE and VO



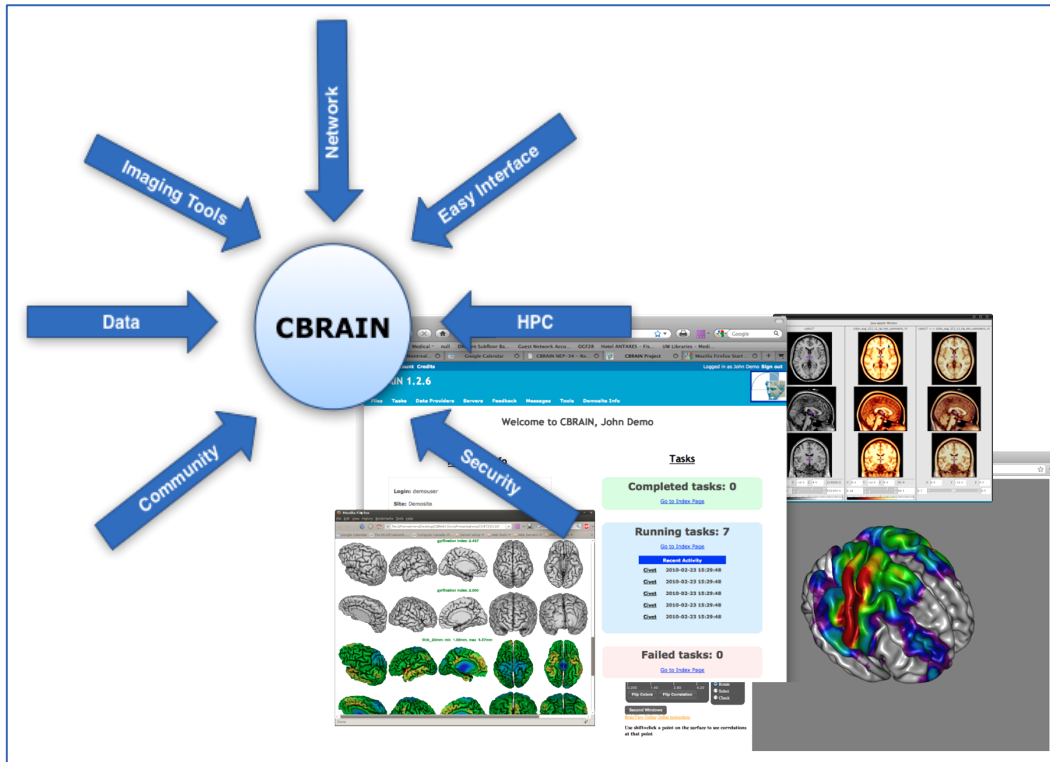
Disciplines

- Any non-commercial, life-science related experiment is welcome
- In practice: bioinformatics, medical imaging, drug discovery

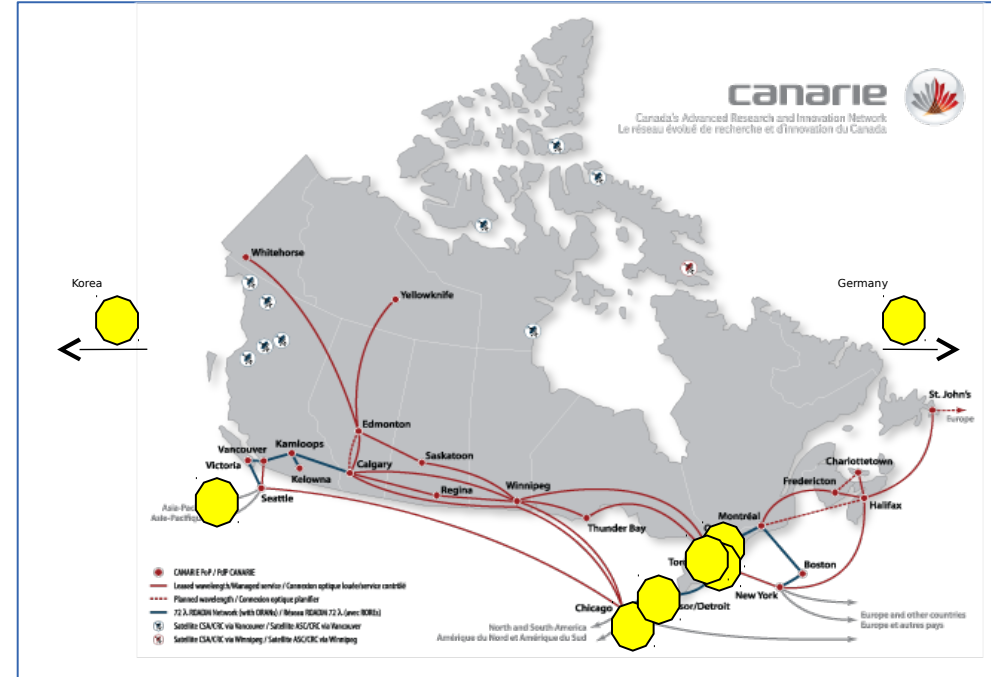
Provided services

- VO monitors sites and services (Nagios)
- Users are free to use any tool to access resources

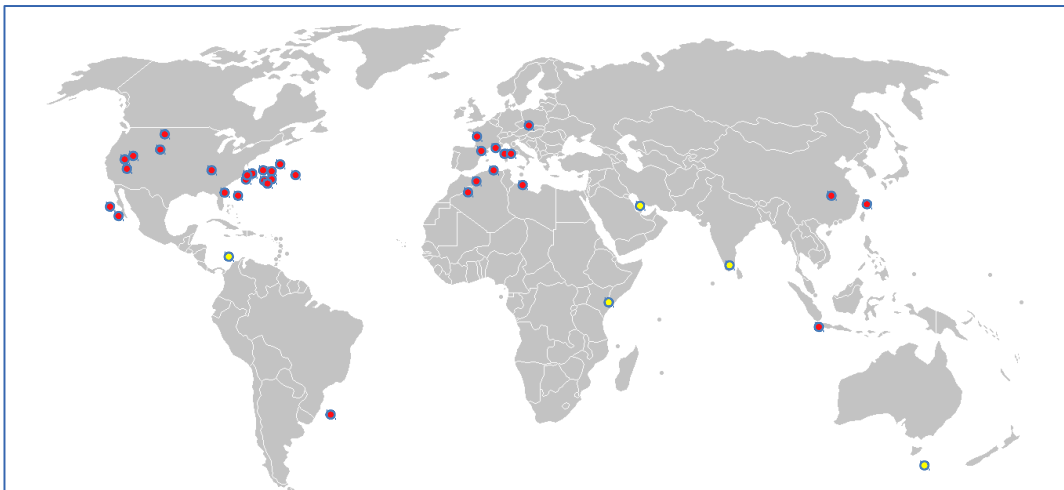
CBRAIN: integrated web platform



Computing infrastructure



Approx. 60 virtual labs, 200+ researchers from 17 countries



Status w.r.t DIRAC

- No integration so far
- Interested to experiment with EGI resources