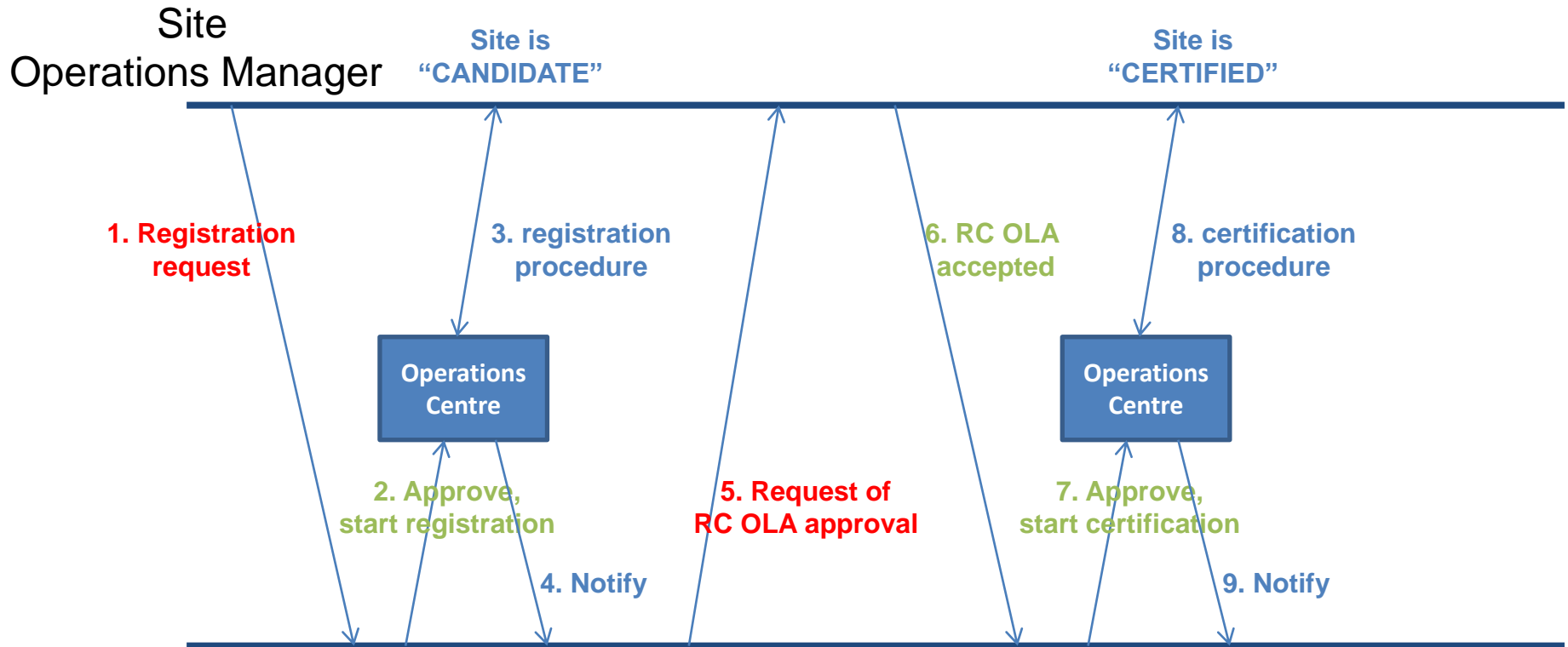


OLA Negotiation Workflow Proposal

T. Ferrari, 15 March 2011

- **A. Site Operations Manager**
 - Triggers the start of the registration procedure
 - Accepts/rejects the Resource Centre OLA
 - Endorses and enforces policies, procedures and the Resource Centre OLA (Resource Centre part)
- **B. Resource Infrastructure Operations Manager**
 - Accepts/rejects the membership of a new Site
 - Negotiates the Resource Centre OLA
 - Endorses and enforces policies, procedures and the Resource Centre OLA (Resource Infrastructure Provider part)
- **C. Operations Centre**
 - Performs the site registration procedure (on request of the Resource Infrastructure Provider)
 - Performs the site certification procedure (on request of the Resource Infrastructure Provider)



Resource Infrastructure
Operations Manager