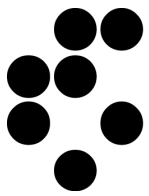


Slovenian NGI

www.sling.si

Barbara Krašovec

Thanks to Dejan Lesjak and Jan Jona Javoršek



arnes

SLING partnership



Founding members (knowledge of grid on one side and network/support on the other):

- ARNES (legal representative): Academic and Research Network of Slovenia
- JSI: Jožef Stefan Institute
- Joining academia and industry in the future

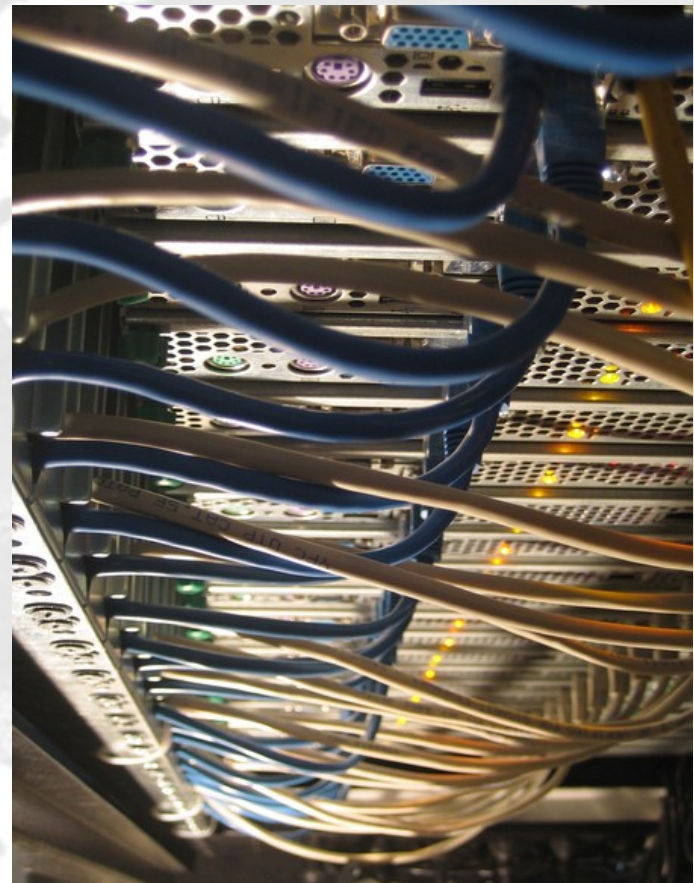
ARNES



- Academic and Research Network of Slovenia (public institute and ISP for organizations in research and education)
- Network and services
- Co-founder of DANTE
- Member of TERENA, CEENet, RIPE, CENTR, EURid, FIRST, etc.

JSI

- Leading scientific research institute of Slovenia
- Experimental Particle Physics Department: experiences with grid - SIGNET cluster since 2004



Transition

Not difficult, only one site.

- ✓ Establish NGI Manager, deputy, ...
- ✓ Setting up a ROD team
- ✓ NGI Nagios
- ✓ Setting up user support infrastructure (using GGUS directly)
- ✓ Installation of services for NGI

NGI_SI

- Created in April 2010
- GGUS ticket 57557
- Management mailing list: management@sling.si
- Security mailing list: security@sling.si
- ROD team mailing list: ops@sling.si
- NGI Nagios monitoring system:
<https://nagios.sling.si/nagios>
- Mailing list for GGUS tickets and 1st line support: support@sling.si

Sling infrastructure (1)

- SiGNET cluster since 2004 (1172 cores, ~300TB of disk space)
 - NorduGrid ARC and gLite support for EGEE
 - Support for ATLAS, Pierre Auger, Belle and other smaller VOs
- Arnes demo cluster (288 cores, 48TB of disk space)



Sling infrastructure (2)

- Central services at Arnes and IJS (topBDII)
- Support for national VOs (testing VOs, local communities)
- Support for international VOs (central services for gLite and NorduGrid ARC support where needed by VOs)

Sling infrastructure (3)

- 2 clusters at the moment
(Keep in mind that Slovenia is a country of only 2 million)

Slovenia	jost	288	0+0	12+0
	SiGNET	1154	52+0	18+0
	SiGNET-V	1154	0+52	0+0

Sling and EGI.eu

- EGI.eu infrastructure:
- National level: info services, VOMS, monitoring, support (NOC and helpdesk)
- ticketing, accounting, releases

- NGI top BDII
- NGI Nagios for monitoring
- Testing site: NGI site BDII, SE, CE

Future plans

- Involvement in projects EGI Inspire, ARC
- At least two more research centres to join from academia (UL, UNG), couple of industry research centres expected to join later

Becoming part of EGI: Governance

- Prepared to participate in the operational meetings by videoconferences, face to face meetings only if possible
- Comfortable in our role as consumers of operational tools - OTAG (Operations Tool Advisory Group), not expected to be more involved in advisory group in the near future

Becoming part of EGI: Procedures and policies

- Familiar with procedures and policies
- Just started, for now we do not have issues nor suggestions

Becoming part of EGI: Support

- Just one site for now, we can manage with available resources
- As the new centers will join, we expect to evolve our procedures and internal organization accordingly
- 1st line support and ROD same people for now (mailing list, jabber)
- later ticketing system if necessary



Becoming part of EGI: Tools

- Consumers of central tools
- Accounting is central, but we intend to use our own afterwards, integrated with the central one

Training



- We will provide our own trainings (for now, no materials are available – working on it)
- Interested in attending events organized by other NGIs

Your best knowhow

- Intergration of gLite and ARC
- Chrooted execution environnements

Summary

- Slovenian NGI very small
- Only one site at the moment
- Enlargement expected in the next year(s)
- Staff familiar with procedures
- Documentation and training materials in preparation
- Planning on setting up an ARC based site

A grayscale topographic map of Europe, showing the continent's terrain with varying shades of gray representing elevation. The map is centered on the continent, with the British Isles to the west and the Mediterranean coast to the south.

Questions?