

# EMI Security “Architecture”

## Present and Future

John White for EMI Security Area

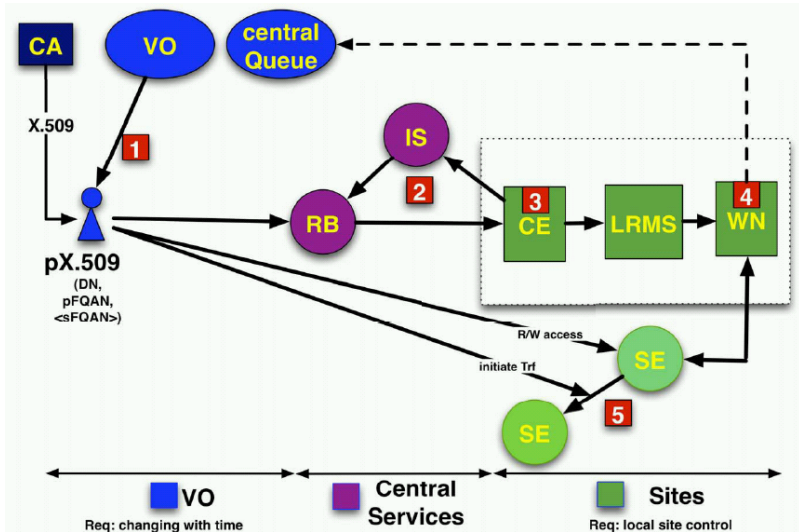
Helsinki Institute of Physics

September 21st, 2011

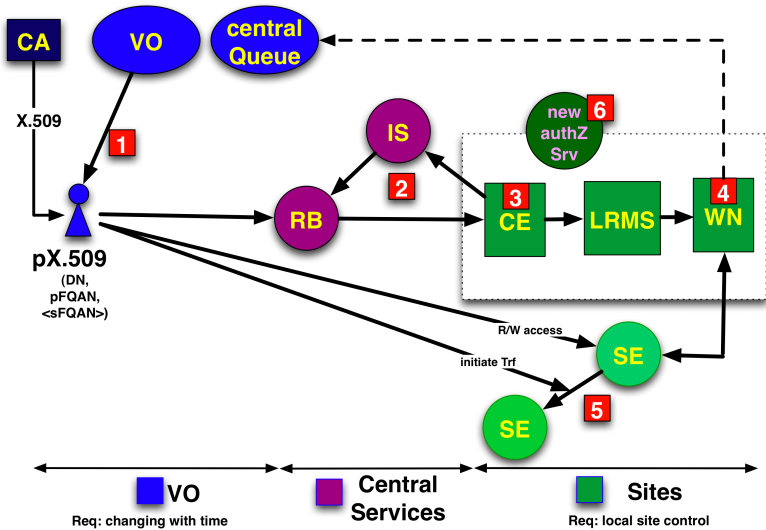
# EMI Security

- ▶ Security model based on ARC, gLite and UNICORE.
- ▶ First workshop (AAI). EGI Amsterdam 2010.
  - ▶ Subsequent participation to other AAI workshops.
  - ▶ **Less user handling of credentials, more home inst. AAI.**
- ▶ Common SAML profile
  - ▶ User attributes for AuthZ. Profile delivered.
- ▶ Common XACML profile
  - ▶ Write standard AuthZ schemes for services. Profile delivered.
- ▶ Common Authentication Libraries
  - ▶ Standard Authentication across all EMI services. APIs delivered. Implementation ongoing.
- ▶ Common Delegation method
  - ▶ Simplified delegation of X.509 creds. Under discussion.
- ▶ Virtualization/Cloud activities
  - ▶ Argus-EES authorize initiation and use of VMs. Ongoing discussions. EMI Virt/Cloud WG.

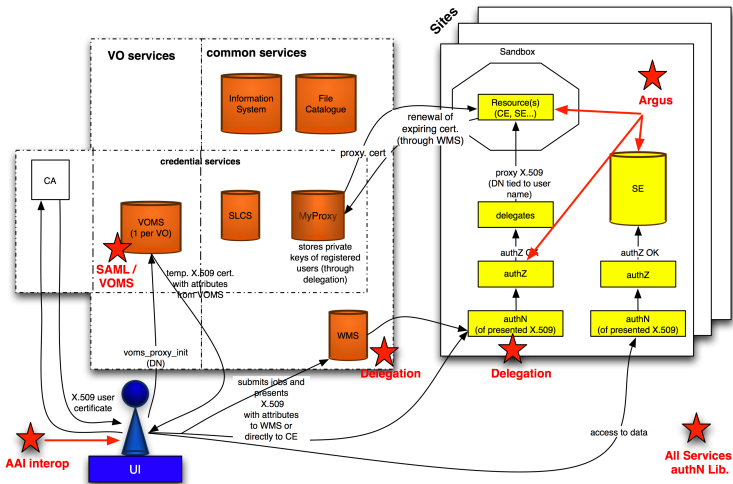
# Security Domains



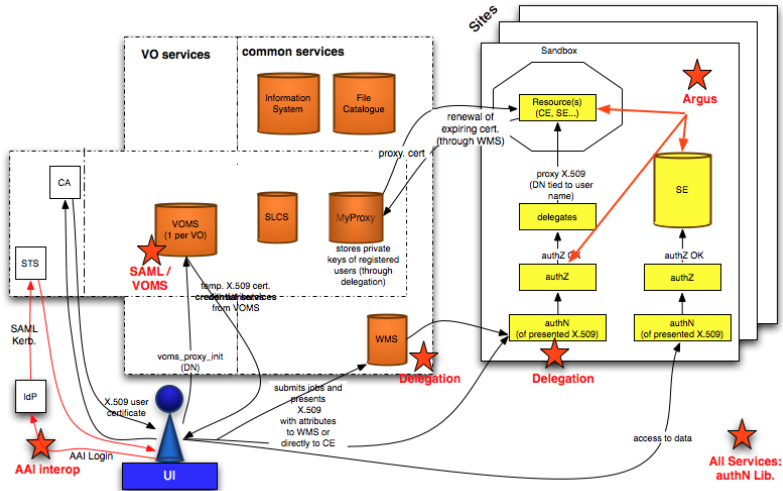
# Security Domains



# EMI Security Work



# EMI Security Work



# EMI Security

- ▶ **First workshop (AAI). EGI Amsterdam 2010.**  
<https://twiki.cern.ch/twiki/bin/view/EMI/EmiJra1T4AAI>
- ▶ **Common SAML profile**  
<https://twiki.cern.ch/twiki/bin/view/EMI/EmiJra1T4SAML>
- ▶ **Common XACML profile**  
<https://twiki.cern.ch/twiki/bin/view/EMI/EmiJra1T4XACML>
- ▶ **Common Authentication Libraries**  
<https://twiki.cern.ch/twiki/bin/view/EMI/EmiJra1T4SecurityCommonAuthNLib>
- ▶ **Common Delegation method**  
<https://twiki.cern.ch/twiki/bin/view/EMI/EmiJra1T4DelegationInEmi>