

---

# Towards an e-infrastructure for plant phenotyping project report - 08/03/20

PI: Vincent Nègre, INRAE France

Shepherd : Nicolas Cazenave, CINES France

---

---

# Access to EOSC services

- SLA finalized the 17/03/2020
  - The IN2P3 and CESNET-CSS have provided resources as defined in the SLA (cloud compute and online storage resources).
  - We can connect the IN2P3 and CESNET-CSS clouds with the EGI-checkIn service.
  - Very good support with these resource centers (thank you !).
  - No access yet to the CYFRONET online storage (not limiting for the moment).
-

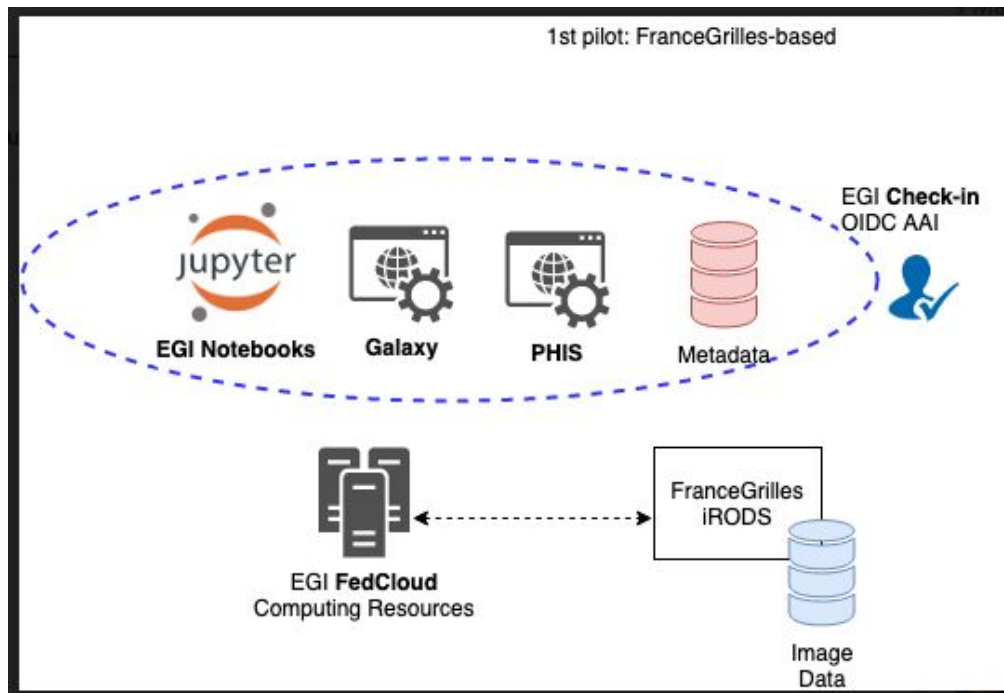
---

---

# On our side

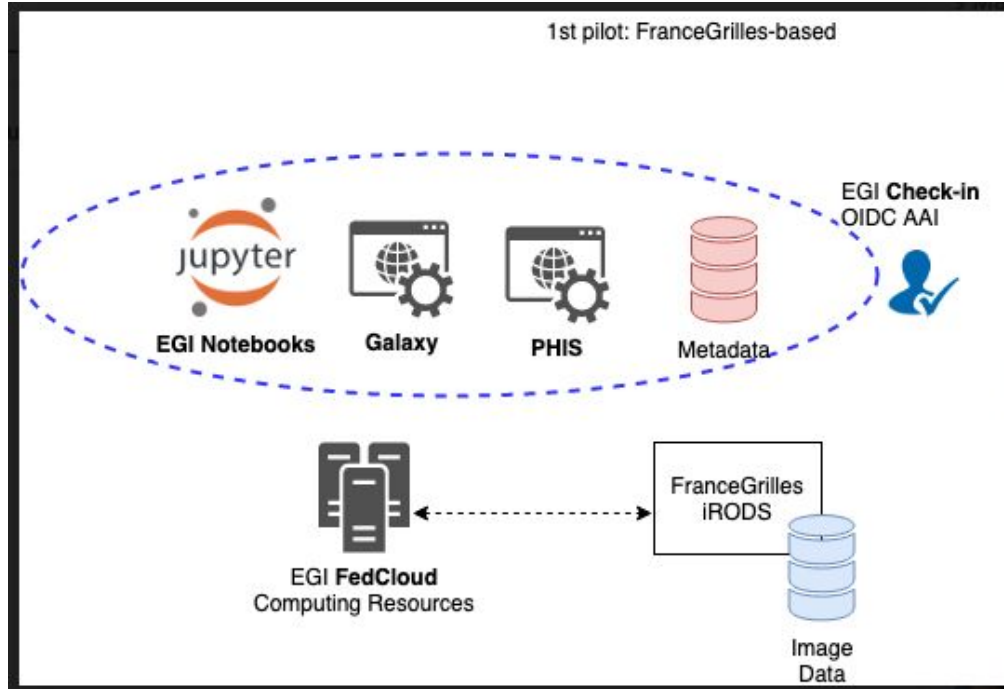
- 3 use cases have been proposed.
  - A master student is working on the first use case.
-

# First pilot



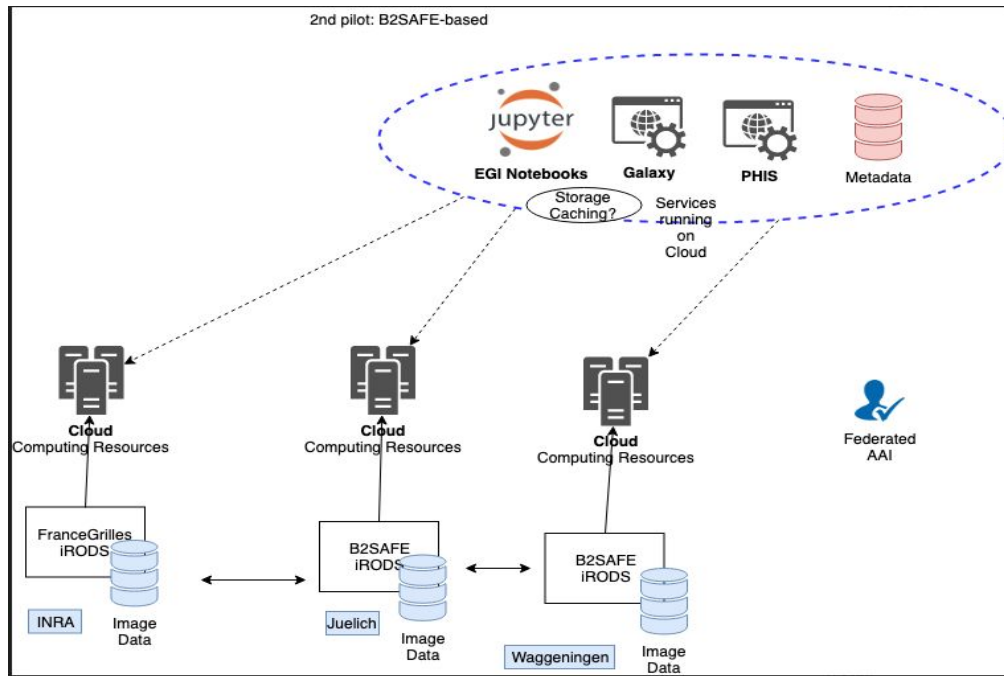
- Our information system (PHIS) will be deployed on **EGI virtual machines** (**IN2P3-IRES ressource**)
- The storage layer is based on the existing **FranceGrilles iRODS** infrastructure
- An authentication layer based on the **EGI check-in service**
- A computing layer provided with the **EGI Notebooks service** and **Galaxy environment** will be added.

# First pilot



- OK for IN2P3-IRES cloud access and iRODS storage layer.
- **Need support from the service provider** to integrate **EGI check-in authentication** in our information system; also to use **EGI Notebooks service** and **Galaxy environment**.

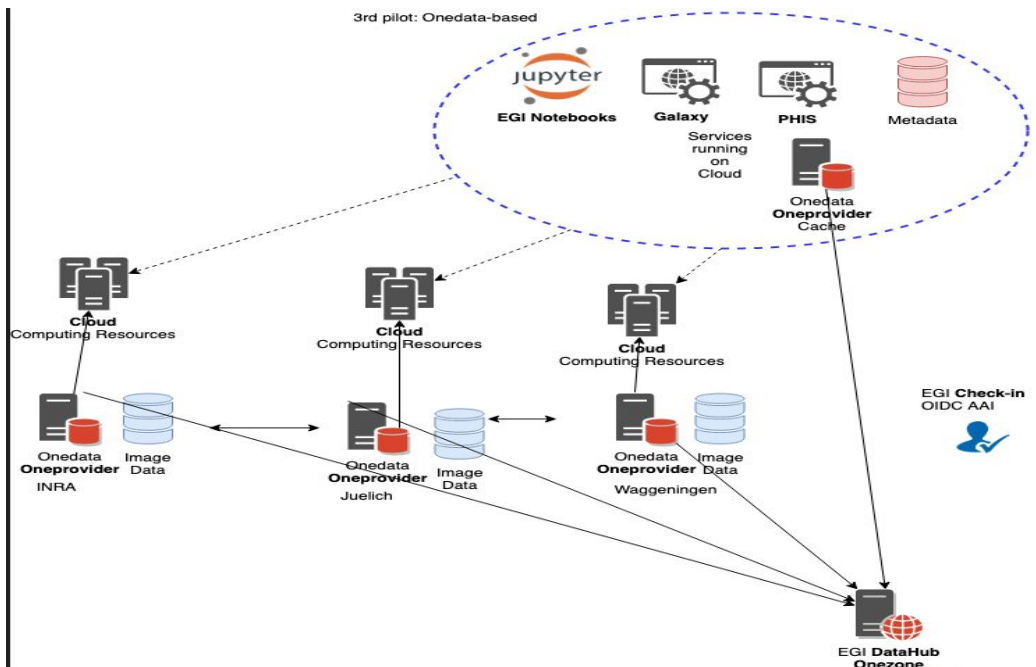
# Second pilot



Compared to the previous pilot the **storage layer is based on the B2SAFE service** supported by the EGI infrastructure.

We will need support the deploy (we or EOSC?) and the use B2SAFE service.

# Third pilot



Compared to the previous pilot the **storage layer is based on the Data Hub service** supported by the EGI infrastructure.

We will need support the deploy (we or EOSC?) and the use Data Hub service.

Questions?

---