

**Towards a Global
Federated
Framework For
Open Science
Cloud**

Hussein Sherief

LDGD

CONTENTS

01 / Taiwan Typhoon 05 / Sustainability

02 / Smart City

03 / Precision Medicine /

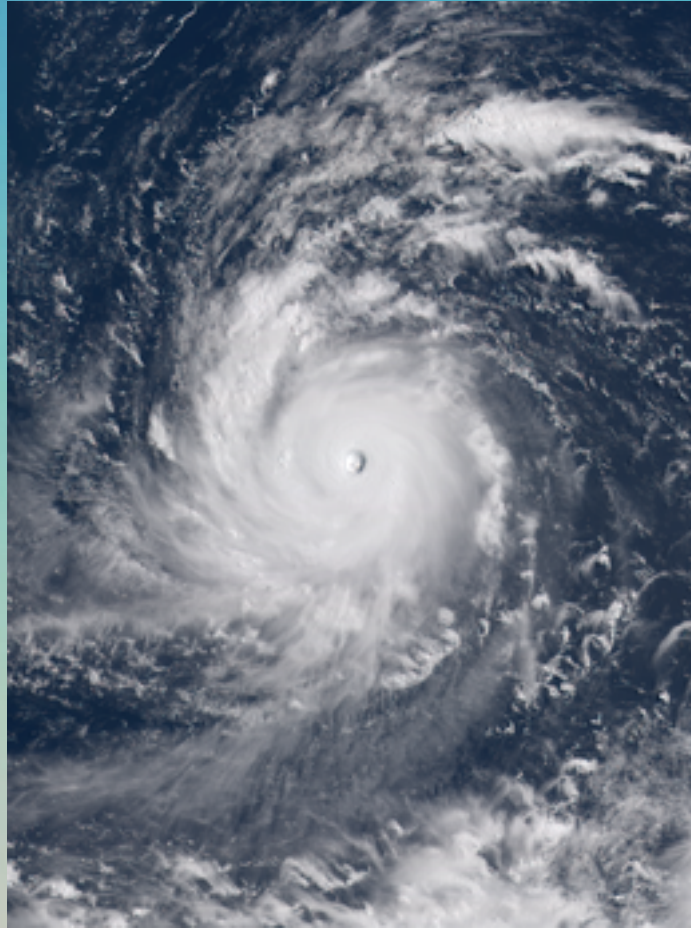
04 / Next Steps

Taiwan Typhoon Simulation

updates

...

▼ Taiwan Typhoon Simulation



Typhoon Soudelor was a category five typhoon in 2015. It was formed on 29 July 2015 and dissipated on 12 August 2015



Areas affected
Mariana Islands, Japan, Philippines,
Taiwan, China, South Korea, Japan



Past Typhoon
Simulation of
Typhoon Soudelor



Present Typhoons
simulations



▼ Typhoon Souledor Simulation



WRF-4DVAR SIMULATION
This simulation is on going

**ACADEMIA SINICA
GRID COMPUTING
CENTRE
(ASGC)**



Data is locally
collected



Doppler Radar
Data is used,

Is Satellite
Radiation Data
available locally?



Data from China
Meteorological
Administration

we can use
MWHS FY3A-FY-
3B which has 15
km resolution



We need to
determine by how
much the
accuracy is
improved

▼ Typhoon Souledor Simulation

OPENCOASTS



1

FORECASTS

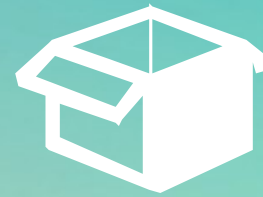
48 hour forecasts are being performed daily in OPENCoastS since July 5. Results indicate that the model is stable, without any signs of numerical problems.



2

COMPARISON

A comparison between modeled and measured sea surface elevations indicates that the accuracy is within expectations, but there is room for improvement



3

IMPROVEMENT

Data required for improvement (bathymetry, topography, real-time tide gauge data),



4

IMPLEMENTATION

implementation of SENTINEL2 imagery in OPENCoastS



5

Data Resources

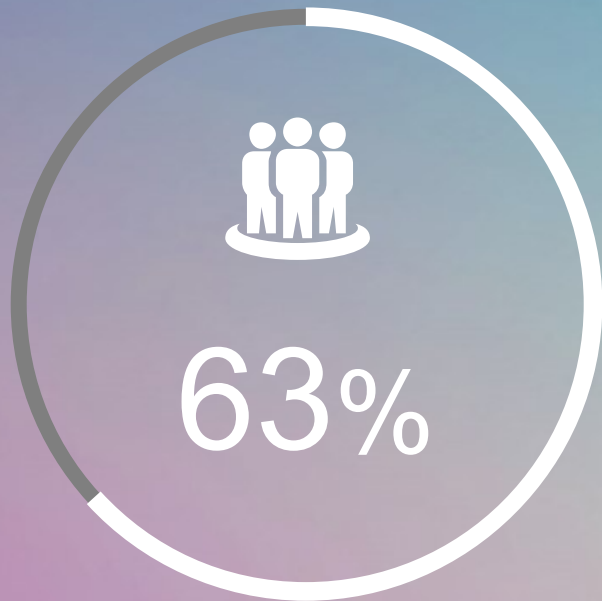
From China, Data resources were provided from China Meteorological Administration and CASEarth but the required Atmospheric Parameters were not available

SMART CITY

SHENZHEN

...

▼ SMART CITY



Isolated Servers

Shenzhen smart city simulation software is currently only available on Isolated servers



Porting

Porting the smart city software from isolated servers to CSTCloud is facing a number of technical issues



Atmospheric Parameters

A request has been made to derive the Atmospheric Parameters using the smart city software along with SENTINEL 2 imagery

PRECISION MEDICINE

The main issue with Precision Medicine is the issue of Ethics.

There should be global guidelines and regulations on ethics to facilitate data sharing and data processing. This matter should be referred to higher bodies



NEXT STEPS

GOING FOREWORD

...

▼ NEXT STEPS

Typhoon Souledor was simulated and was used for calibration

Past Taiwan Typhoon Simulation

Current Taiwan Typhoon

Using both WRF-4DVAR and OpenCoasts, we try to simulate current typhoons

SMART CITY

Simulate Storm surge for smart city using OpenCoasts



LAUNCH Precision Medicine

global ethics guidelines and regulations for precision medicine

SUSTAINABILITY

MAJOR
DEVELOPMENTS

▼ SUSTAINABILITY

DEVELOPMENTS

GOSC is currently being addressed on EGI Symposium work shop in November 2020, on CNIC-CAS symposium in May 2021 in Beijing and on ITU Study Group Meeting in Geneva in October 2020



USER COMMUNITY

GOSC has now acquired the status of a major platform that can deliver services. A large user community and stakeholders will also be participating in the near future. There is funding and standards coordination activities in 2021

THANK YOU

