



Innovation, Exploitation, Communication Dissemination and User support

Smitesh Jain

Innovation Manager, EGI-ACE
Senior Innovation Specialist, EGI Foundation

Dissemination level: Public

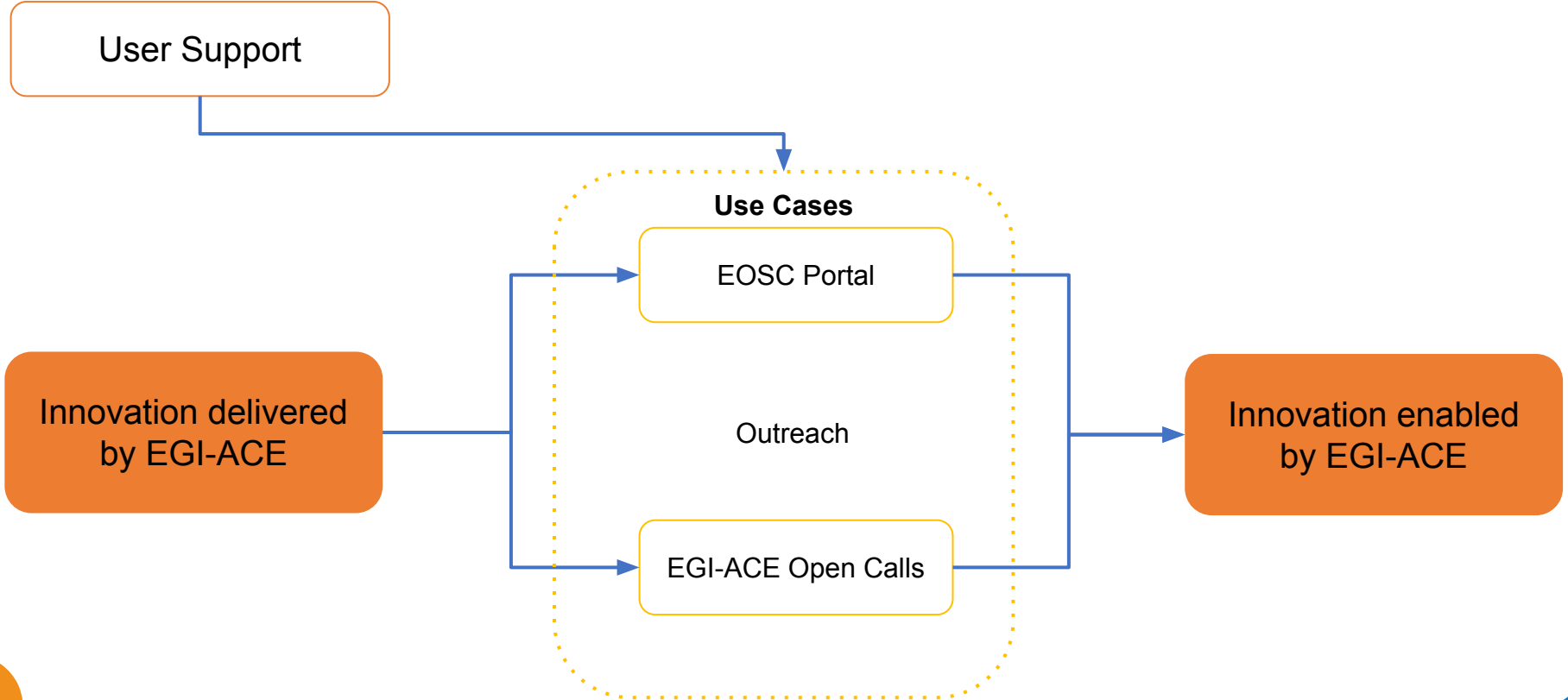
Disclosing Party: Project Consortium

Recipient Party: European Commission

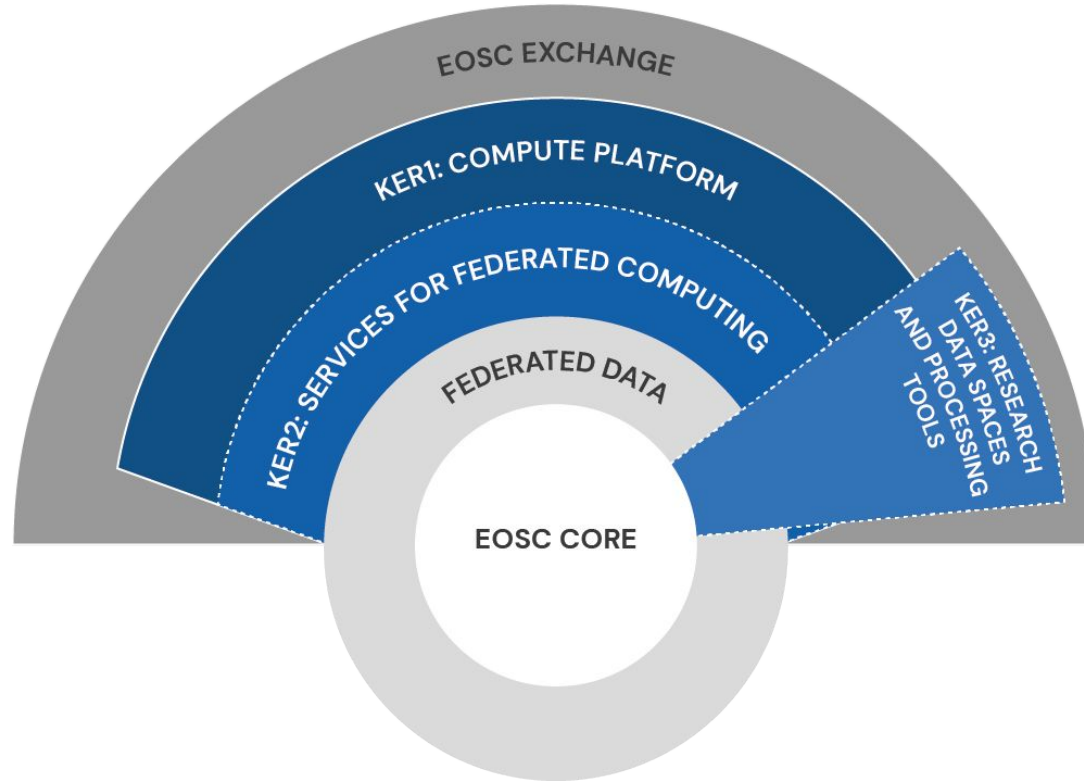


EGI-ACE receives funding from the European Union's Horizon 2020 research and innovation programme under grant agreement no. 101017567.

INTRODUCTION



KEY EXPLOITABLE RESULTS



- EGI Infrastructure Manager
- Dynamic DNS for EGI-ACE
- EGI Workload Manager
- EGI DataHub
- FTS
- RUCIO
- OpenRDM
- EGI Notebook
- Deep Training Facility
- DODAS
- EC3
- PaaS Orchestration
- AppDB
- EGI Software Distribution
- Federated Resource Providers
- EGI Replay

Introduction of new services to Service Portfolio (EGI Infrastructure Manager, EGI Software Distribution and EGI Replay)

Integration of the services with EGI environment

Improvement to the services

- Accounting
- Authentication and Authorisation
- Configuration Database
- Helpdesk
- Messaging
- Monitoring
- Operations Portal
- Software Provisioning
- Infrastructure
- Green Computing
- Support and Coordination Activities

Improvement to the services

Green Computing Taskforce

The project officially supported 5 Data Spaces:

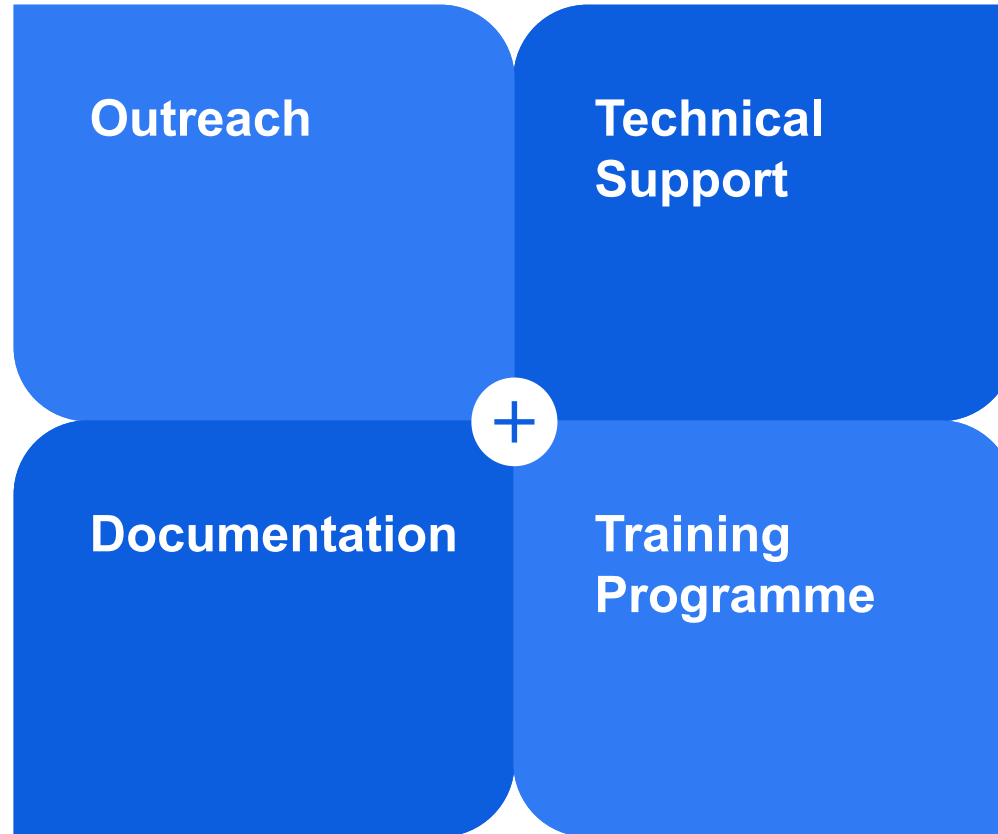
- ENES Data Space
- LOFAR Science Processing
- WebODV
- EMSO Data Portal,
- GBIF Portugal

Use case support

New mechanism for delivery to users

The project also supported 17 Thematic Services:

- WeNMR (4)
- Virtual Imaging Platform (1)
- UseGalaxy.eu (1)
- OpenRiskNet (1)
- OPENCoastS Portal (1)
- PROMINENCE/Fusion (1)
- Disaster Mitigation and Agriculture (1)
- OPERAS (2)
- EISCAT Data Access Portal (1)
- VIRGO (1)
- e-RIHS (1)
- Geohazards Exploitation Platform (GEP) and GEO-DAB



OUTREACH



WEBSITE

EGI-ACE webpage integrated in the EGI website has 4000+ unique monthly visitors

SOCIAL MEDIA

EGI-ACE has been promoted through the EGI social media. Twitter: 3200+ followers
LinkedIn: 2200+ followers
Youtube: 260+ subscribers



PRINTED AND DIGITAL MATERIAL
 Brochures, Flyers, Roll-ups and MOO Cards.
 Other giveaway materials



EVENTS

2 Flagship conferences featuring several sessions, workshops, tutorials, trainings and demos.
50+ external events.
5 conference booths featuring EGI-ACE.
Contribution to EOSC Future events.



Videos

- 1 video promoting the open call
- 1 video promoting the impact
- 1 video promoting the Data spaces
- 3 videos promoting the services



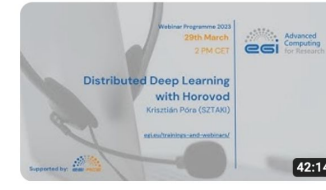
Unveiling the Impact of the EGI-ACE Project:
A Journey of Innovation and Success



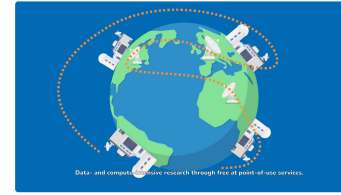
The EGI-ACE webODV – Online extraction,
analysis and visualisation of SeaDataNet...



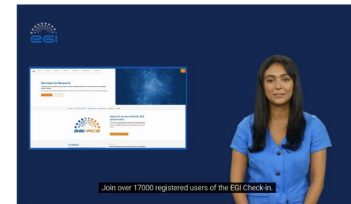
EGI-ACE - Free services supporting data- and
compute-intensive research



20230329_Webinar: Distributed Deep
Learning with Horovod



EGI at ENVRIweek2022

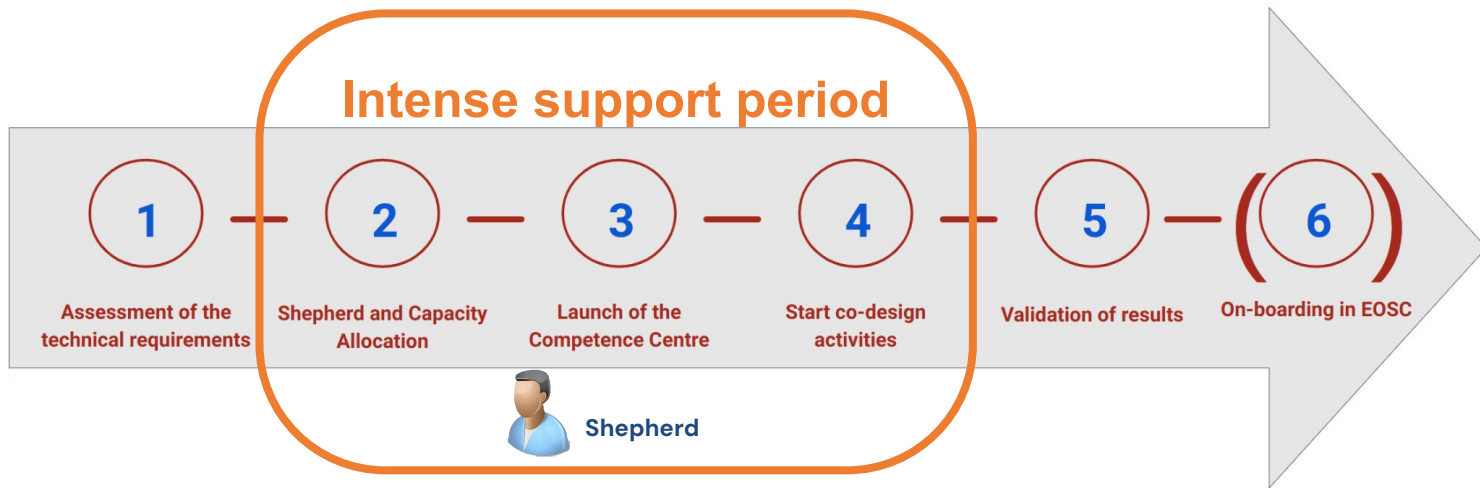


SCALED, DISTRIBUTED USER SUPPORT

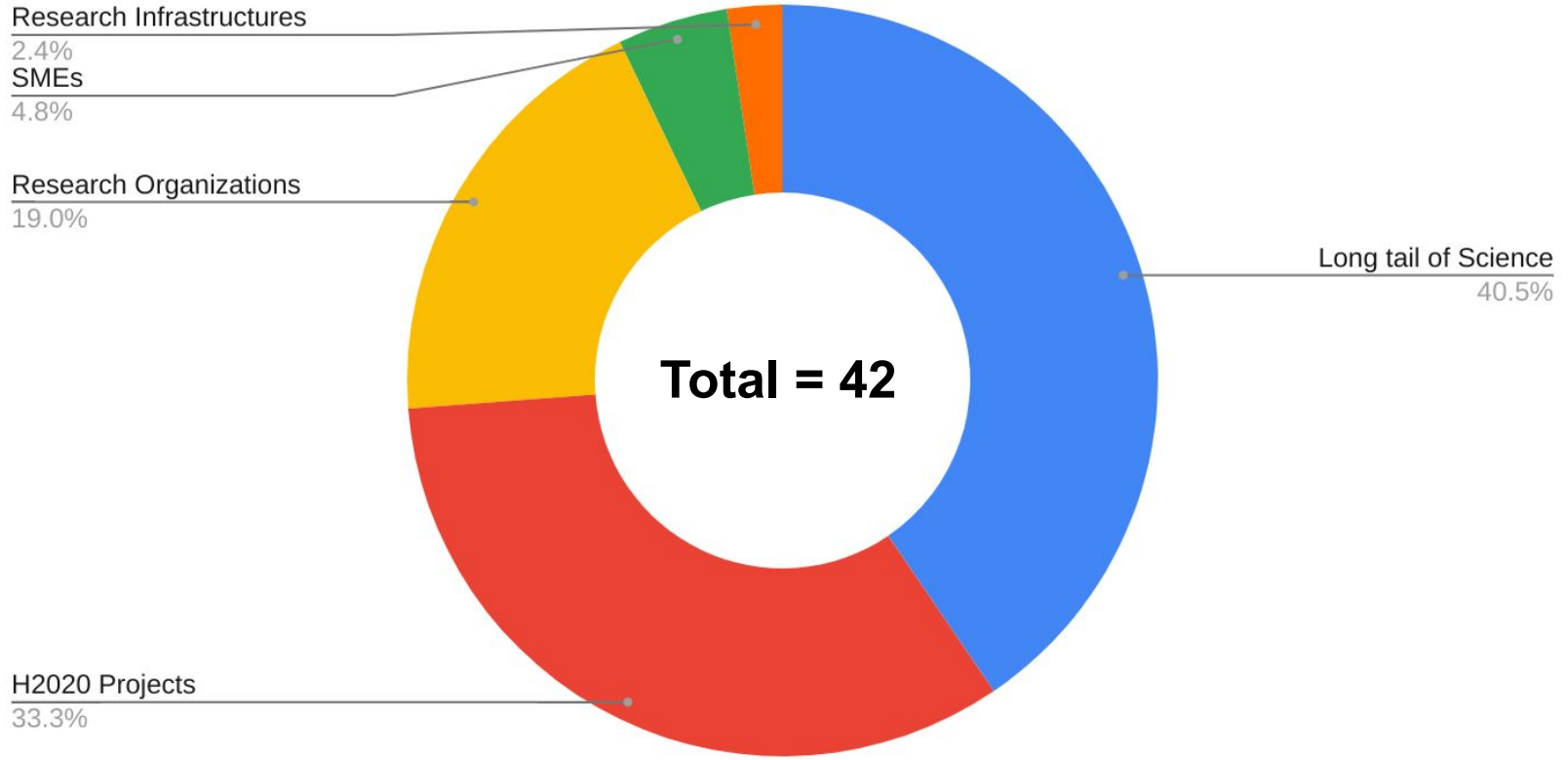
189 Orders from Marketplace



42 Applications



USE CASES RECEIVED FROM OPEN CALL



<https://docs.egi.eu>

Welcome to the EGI Documentation!

EGI is an international e-Infrastructure providing advanced computing and data analytics services for research and innovation. The EGI Federation offers a wide range of services for compute, storage, data management, training, and support. This is the start page for the user and provider documentation of the EGI Services.



For Users

How to access and use EGI services to benefit from advanced computing.



For Providers

How to join the EGI Federation and operate services for advanced computing.



☆ Stars 11

🔗 Forks 43



Getting Started

Introduction to EGI services

Tutorials & Guides

Tutorials for common use cases in the EGI infrastructure

Authentication & Authorization

Identity and access management in the EGI Cloud

Compute Services

Compute services in the EGI Cloud

Data Services

Data services in the EGI Cloud

Security Services

Security services in the EGI infrastructure

Development Environments

Interactive environments for scientific development in the EGI Cloud

Training Infrastructure

The training infrastructure on EGI Cloud

Joining EGI as a provider

Guidelines for service providers to join the EGI Infrastructure

Check-in

Integration with Check-in for IdPs and SPs

Cloud Compute

IaaS Service providers documentation

Notebooks

Architecture and Operations of EGI Notebooks

High-Throughput Compute

Execute thousands of computational tasks to analyse large datasets

DataHub

Documentation for EGI DataHub Service Providers

Online Storage

Documentation for EGI Online Storage Service Providers

Operations manuals and How-Tos

Operations manuals for Service Providers

Regional Operator on Duty (ROD)

Description of the NGI oversight activity.



HANDBOOKS



For users

For cloud, platform, thematic providers

For HPC providers



D2.9 EOSC Compute Platform Handbook

| | |
|----------------------|---|
| Lead partner: | EGI Foundation |
| Version: | 1 |
| Status: | FINAL |
| Dissemination Level: | PUBLIC |
| Keywords: | EOSC, Compute, Handbook, EOSC Compute Platform |
| Document Link: | https://documents.egi.eu/document/3797 |

Deliverable Abstract

This is an updated version of the EOSC Compute Platform Handbook. The EOSC Compute Platform Handbook is **written for EOSC users** to provide guidance on how to use the various services of the EOSC Compute Platform. The EOSC Compute Platform (ECP) is a system of federated compute and storage facilities together with higher level platforms to support various data and application hosting, data processing and analysis use cases.



EGI-ACE receives funding from the European Union's Horizon 2020 research and innovation programme under grant agreement no. 101017567. Visit go.egi.eu/egi-ace for details.

241 views, 202 downloads (D2.5)



D7.2 Status of the SMS Processes

| | |
|----------------------|---|
| Lead partner: | EGI Foundation |
| Version: | 1 |
| Status: | Final |
| Dissemination Level: | Public |
| Keywords: | EOSC, SMS, Processes, ECP |
| Document Link: | https://documents.egi.eu/document/3807 |

Deliverable Abstract

EGI-ACE is one of the service provider projects of EOSC. EGI-ACE delivers over 30 services that form the 'EOSC Compute Platform' (ECP) and thematic services that rely on the ECP to provide scalable data analytics environments for domain researchers. Majority of the EGI-ACE services are managed through the ISO 20k compliant service management system (SMS) of the EGI Foundation. This deliverable introduces this SMS and provides guidance to those new providers who want to join the EOSC Compute Platform and therefore need to comply with certain SMS processes. The document also provides an overview of the interfaces between the EGI-ACE SMS and EOSC SMS.

78 views, 86 downloads



D7.3 Final version HPC integration Handbook

| | |
|----------------------|---|
| Lead partner: | EGI Foundation |
| Version: | 1 |
| Status: | Under EC review |
| Dissemination Level: | PUBLIC |
| Keywords: | HPC, EOSC Compute Platform |
| Document Link: | https://documents.egi.eu/document/3804 |

Deliverable Abstract

The HPC integration handbook describes how HPC systems can be incorporated into the EOSC Compute Platform delivered by the EGI-ACE project. This handbook is the result of the piloting activities with use cases and providers supporting workflows that run on combined Cloud, HTC and HPC resources. In this document we detail the integration mechanisms used in the pilots and provide information for providers on how to integrate HPC systems into the EOSC Compute Platform, and for users on how to use these HPC systems via EOSC for running container-based workloads.



EGI-ACE receives funding from the European Union's Horizon 2020 research and innovation programme under grant agreement no. 101017567.

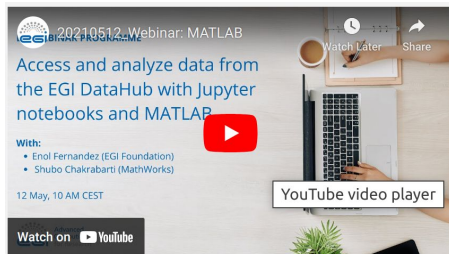
183 views, 166 downloads

TRAININGS AND WEBINARS



Tutorials

<https://docs.egi.eu/users/tutorials>



Webinars

<https://www.egi.eu/trainings-and-webinars/>

| | | |
|--|---|---|
| <p>Webinar Programme 2023 14th June 2 PM CET Advanced Computing for Research</p> <p>Leveraging the Onedata Platform for Long-Term Data Archiving and Processing Integration with OAIS Standard and FaaS Capabilities</p> <p>Lukasz Dutka (CYFRONET) egi.eu/trainings-and-webinars</p> <p>Webinar: Leveraging the Onedata Platform for Long-Term Data Archiving and Processing</p> <p>June 14th 2023</p> <p>...</p> <p>Read more</p> | <p>Conference 2023 June 19th 9:00 AM - 6:00 PM Where Research Meets Computing www.egi.eu #EGIG2023</p> <p>Training: FitSM Training</p> <p>Elia Bellussi Officer, EGI Foundation</p> <p>Training: FitSM Training</p> <p>#EGIG2023 19 June 2023, Poznań</p> <p>...</p> <p>Read more</p> | <p>Conference 2023 June 19th 2:00 PM - 3:30 PM Where Research Meets Computing www.egi.eu #EGIG2023</p> <p>Training: Open Science (by OpenAIRE)</p> <p>Shanmugasundaram Venkataraman OpenAIRE</p> <p>Jonathan England OpenAIRE</p> <p>Training: Open Science (by OpenAIRE)</p> <p>19 June 2023, Poznań</p> <p>...</p> <p>Read more</p> |
|--|---|---|

New thematic services developed

I-ENERGY developed multiple AI services which provide either real-time, periodic or on-demand inference according to the needs of each specific use case

Scientific publications

69 new publications have been published with the support of EGI-ACE

Access to increased number of users

There is now a public deployment of Pangeo on EOSC for European researchers and their collaborators.

Long term sustainability of thematic services

The PLOCAN servers were outdated. EGI-ACE provided the infrastructure to deploy Kubernetes, JupyterHub and the VRE.

New thematic services to onboarded in EOSC

18 services have been onboarded to EOSC portal.

New mechanism for delivery to users

Deploying a web service and server where the computational resources are extendable according to the number of user requests.

NET PROMOTER SCORE



20

Promoters (score 9-10) are loyal enthusiasts who will keep buying and refer others, fueling growth.

2

Passives (score 7-8) are satisfied but unenthusiastic customers who are vulnerable to competitive offerings.

0

Detractors (score 0-6) are unhappy customers who can damage your brand and impede growth through negative word-of-mouth.

91

EGI-ACE
NPS

Thank you!

Contact: egi-ace-po@mailman.egi.eu
Website: www.egi.eu/projects/egi-ace



[EGI Foundation](#)



[@EGI_eInfra](#)

